

INUKTUN VERSATRAX 150

OnDemand Specialty System



BEST IN CLASS. FAR... AND AWAY.

The Inuktun Versatrax 150™ is a state-of-the-art pipe inspection system with advanced capabilities.

Industries & Applications

- Municipal (Sewer/Water)
- Power Generation (Hydroelectric/Nuclear)
- Oil and Gas (Offshore/Onshore)
- Petrochemical
- Mining

“Without the Versatrax system, SewerVUE never would have been able to complete a full condition assessment of the entire pipe in less than two days.”

— Csaba Ekes, President, SewerVUE Technology Corporation

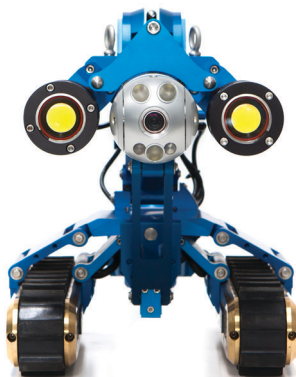
Inspection technology that grows with you

Capable of operating over long distances and a wide range of diameters, Eddyfi Technologies' Inuktun Versatrax 150™ system is a state-of-the-art pipe inspection system with advanced capabilities. The system comes standard with one kilometre (3,300 feet) of copper tether cable, with options for longer lengths using fibre optics. In its in-line configuration, operators can examine pipes from 150 to 300 millimetres (6 to 12 inches) in diameter. For bigger pipes, the vehicle is reconfigured with a parallel chassis, incorporating a remotely motorized camera raise and two high intensity LED lights.

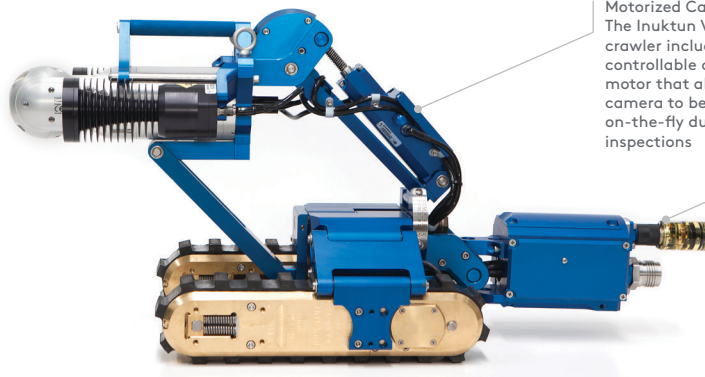
The Versatrax 150 is well suited to a variety of inspection applications including sewers, storm drains, hydroelectric penstocks and fish bypass lines, petrochemical and power plant intake pipelines, and difficult to access pipes in the oil and gas industry. And, like all of our **OnDemand** Specialty Systems, it may be customized with an array of optional equipment including high definition pan-tilt-zoom cameras, retrieval tools, laser measurement and profiling systems, sonar and other Non-Destructive Testing (NDT) sensors.

Parallel

Front view

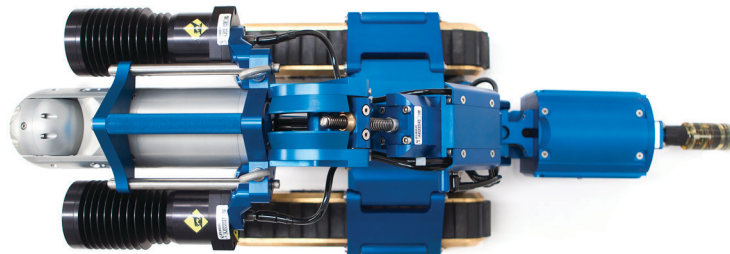


Rear view



Motorized Camera Raise:
The Inuktun Versatrax 150™
crawler includes a remotely
controllable camera raise
motor that allows the
camera to be repositioned
on-the-fly during
inspections

Rear-facing
Inuktun camera



SPECIFICATIONS

KEY SPECIFICATIONS

Depth Rating	60 m (200 ft)
Maximum Tether Length	1,000 m (3,300 ft) (longer fibre optic tethers optional)
Maximum Speed	6.4 m (20.9 ft) per minute
Vehicle Payload	91 kg (200 lb)
Front Facing Camera	Inuktun Spectrum 90™ Optional: Inuktun Spectrum 120HD™ high definition camera**
Operating Temperature	0 °-50 °C (32 °-122 °F)*
Vehicle Weight	45 kg (100 lb) inline, 45 kg (100 lb) parallel
Minimum Vehicle Dimensions	See drawings below

Standard Components

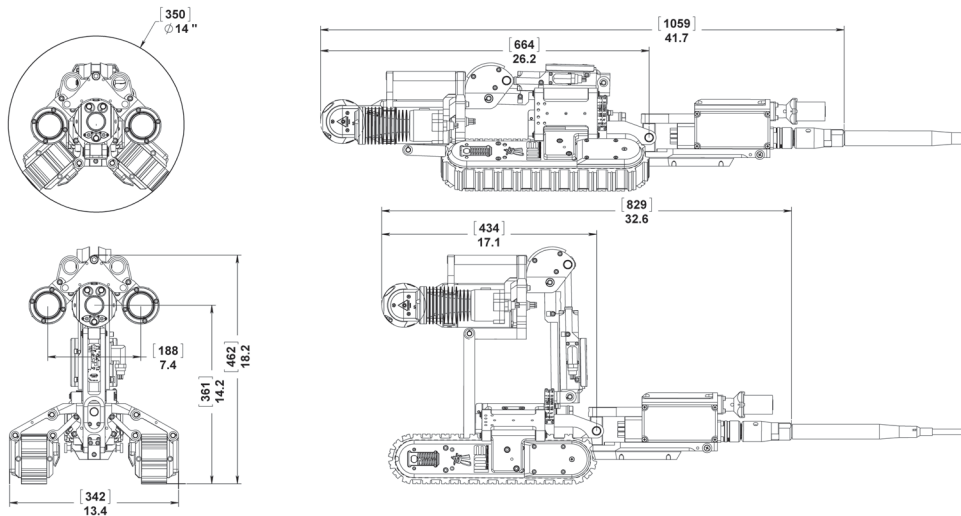
2 × brass Inuktun Minitracs™
1 × Inuktun Spectrum 90™ camera
1 × rear-facing Inuktun camera
Motorized camera raise
2 × auxiliary LED lights (parallel chassis)
175 mm traction enhancement arms (inline chassis)
Inline and/or parallel chassis and wiring harness
300 m (1,000 ft) tether
Rack mount PC-based controller and power supply with ICON™ control and reporting software

*Dependent on operating conditions. Ask your sales expert for more information
**Requires fibre optic cable for >330m (1,000ft) length tether



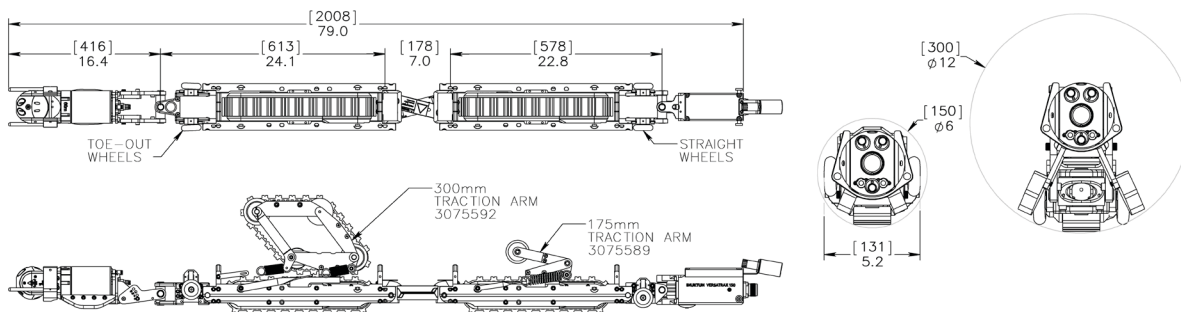
Parallel

Units in inches [mm]



Inline

Units in inches [mm]



The information in this document is accurate as of its publication. Actual products may differ from those presented herein. © 2019 Eddyfi NDT, Inc. Crystal Cam, IM3, and their associated logos are trademarks or registered trademarks of Inuktun Services Ltd. (wholly owned subsidiary of Eddyfi NDT, Inc.) in Canada and/or other countries. Eddyfi Technologies reserves the right to change product offerings and specifications without notice.

www.eddyfi.com

info@eddyfi.com

